

GDI ENGINEERING



U-Haul - College Station

Commercial

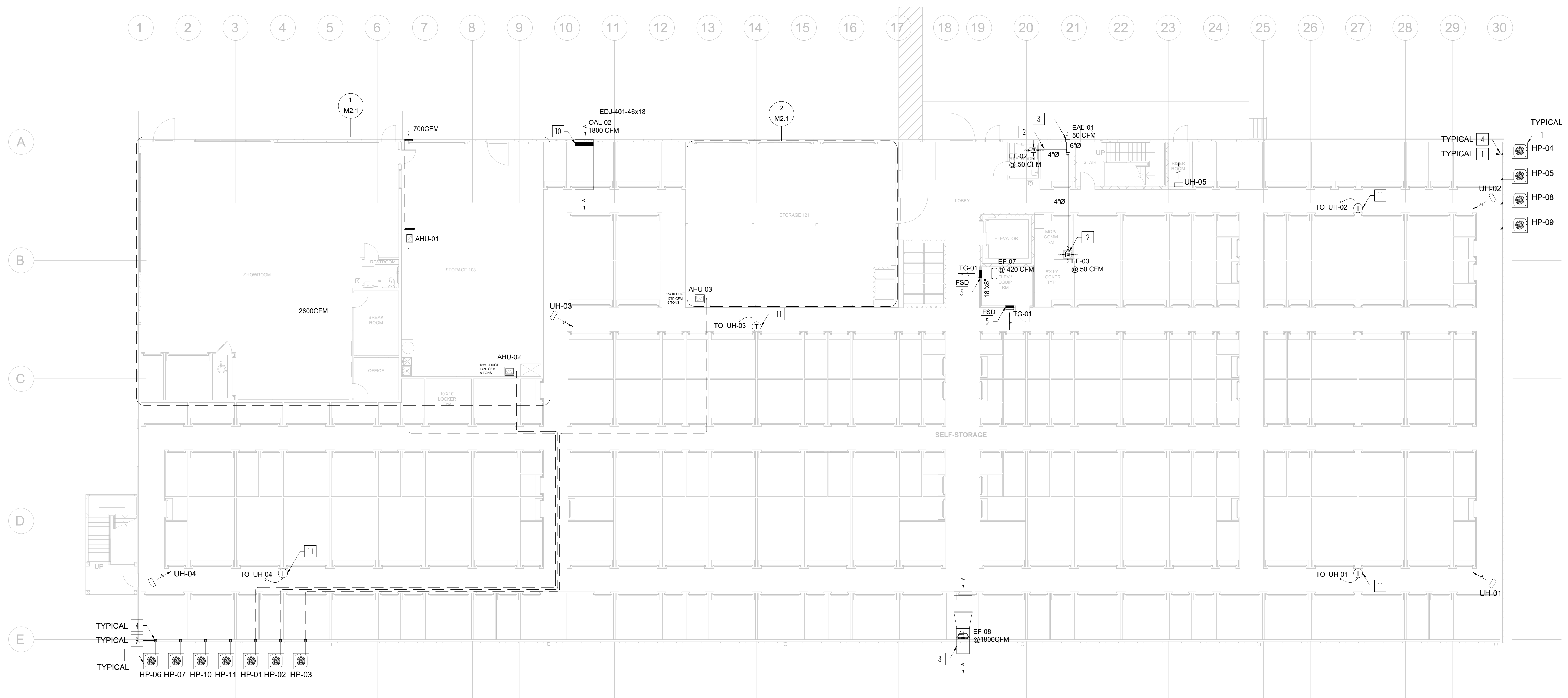
College Station- Texas

MECHANICAL KEYED NOTES:

- 1 — OUTDOOR HEAT PUMPS INSTALLED ON A HOUSEKEEPING PAD - COORDINATE WITH THE ARCHITECT AND THE CIVIL ENGINEER FOR THE FINAL UNIT'S LOCATIONS AND THE HOUSEKEEPING PAD DETAILS.
- 2 — PROVIDE BACK-DRAFT SHUTTER AT THE EXHAUST FAN OUTLET.
- 3 — EXHAUST DUCT TERMINATION TO OUTDOORS TO BE SPACED FROM ANY OPERABLE WINDOW BY >3'. THE LOCATIONS PROVIDED ARE WITHIN THE 3' LIMIT FROM THE PROPERTY LINE. LOCATE THE BOTTOM OF THE DISCHARGE AIR TERMINATION ABOVE GRADE BY +10' MINIMUM.
- 4 — EXTERIOR WALL SEAL PENETRATION OUTLET WITH ELASTOMETRIC LINE-SET COMPRESSION SLEEVE TYPE "TITAN GS30" BY AIREX MANUFACTURING INC. & REFRIGERANT PIPE LINES TO ABOVE IN WALL.
- 5 — PROVIDE 1.5H FIRE SMOKE DAMPER WITH FACTORY SUPPLIED WALL SLEEVE THAT HAS MIN. LENGTH SAME AS THE WALL PLUS ALLOWANCE FOR NECK TIE TO THE DUCT / IF APPLICABLE - INSTALL AS PER MANUFACTURER'S SPECIFICATIONS - COORDINATE WITH FIRE ALARM CONTRACTOR FOR ELECTRICAL SPECIFICATIONS - THE FSD & SLEEVE SHOULD MATCH THE SAME DUCT SIZE.
- 6 — PROVIDE MANUAL VOLUME DAMPER AT THE AHU'S OUTDOOR AIR CONNECTION - TERMINATE THE OA CONNECTION TO THE RETURN PLENUM BOX.
- 7 — RETURN AIR PLENUM & MIXING BOX WITH RETURN AIR FACE GRILL - SEE SCHEDULE FOR AIR DEVICE DETAILS - RETURN AIR GRILL SHOULD BE INSTALLED AT THE UNIT'S FACE THAT IS FREE OF OBSTACLES.
- 8 — FABRIC DUCT COLOR, SIZING, SUPPORTS, PERFORATIONS, JETS AND ALL OTHER SELECTION CRITERIA SHOULD BE PROVIDED BY THE MANUFACTURER - REFER TO SPECIFICATIONS FOR DETAILS.
- 9 — REFRIGERANT LINES FROM OUTDOOR UNIT HEAT PUMP TO THE AHU COIL.
- 10 — PROVIDE DISPOSABLE FILTER FOR THE OUTDOOR AIR LOUVER - FILTER SHOULD HAVE LATCHES AND MOBILE CASING TO ALLOW EASY REPLACEMENT OF THE FILTER.
- 11 — PROVIDE THERMOSTATS CONTROLLER WITH 10 HOUR BACKUP BATTERY - INSTALL AT +48" ABOVE FINISH FLOOR LEVEL - SEE SPECIFICATIONS FOR MORE DETAILS.

GENERAL NOTES:

1. CONTRACTOR IS RESPONSIBLE FOR ROUGH-IN COORDINATION AND LOCATIONS. REFER TO ARCHITECTURAL PLANS FOR LOCATIONS AND FIXTURES.
2. CONTRACTOR IS RESPONSIBLE FOR ANY REQUIRED CUTTING AND PATCHING.
3. ALL NOTCHING, BORING, AND CUTTING OF HOLES IN WALL STUDS AND FLOOR JOISTS SHALL BE PERFORMED BASED ON THE LATEST ADOPTED AND APPROVED EDITION OF THE BUILDING CODE.
4. FINAL EQUIPMENT LOCATIONS ARE TO BE COORDINATED AND APPROVED BY OWNER PRIOR TO INSTALLATION.
5. CONTRACTOR SHALL PROGRAM ALL T-STATS PER THE OWNERS DIRECTION PRIOR TO SYSTEM BALANCING. SUPPLY FANS SHALL BE SET TO OPERATE CONTINUOUSLY DURING OCCUPIED HOURS AND THE COMPRESSOR SHALL CYCLE AND HEATING SHALL ACTIVATE AS REQUIRED TO MAINTAIN SPACE TEMPERATURE.
6. CONTRACTOR SHALL PROVIDE REFRIGERANT PIPING FROM EACH AHU TO EACH CORRESPONDING OUTDOOR CONDENSER. SIZE AND INSTALL PIPING PER MANUFACTURER'S RECOMMENDATIONS.
7. MAXIMUM FABRIC DUCT SIZE SHALL BE 10" DIAMETER.
8. INSTALL DUCTSOX AS TIGHT TO CEILING AS POSSIBLE. PRIOR TO INSTALLATION, COORDINATE WITH OWNER'S REPRESENTATIVE FOR EXAMPLE OF INSTALLATION HEIGHT (APPROVE MOCKUP PRIOR TO CONSTRUCTION).
9. FABRIC DUCT TO BE SIZED AND INSTALLED PER MANUFACTURER'S RECOMMENDATIONS.



FIRST FLOOR MECHANICAL LAYOUT

SCALE 3/32"=1'-0" 1

MEP CONSULTANT:



GDI ENGINEERING
INNOVATING SOLUTIONS

GDI ENGINEERING
3707 Cypress Creek
Parkway, Suite 310
Houston, TX 77068
Office: 346-509-5860
www.gdiengdesign.com

SITE ADDRESS:

U-HAUL OF TEXAS AVE. II
2823 TEXAS AVENUE
COLLEGE STATION, TX 77845

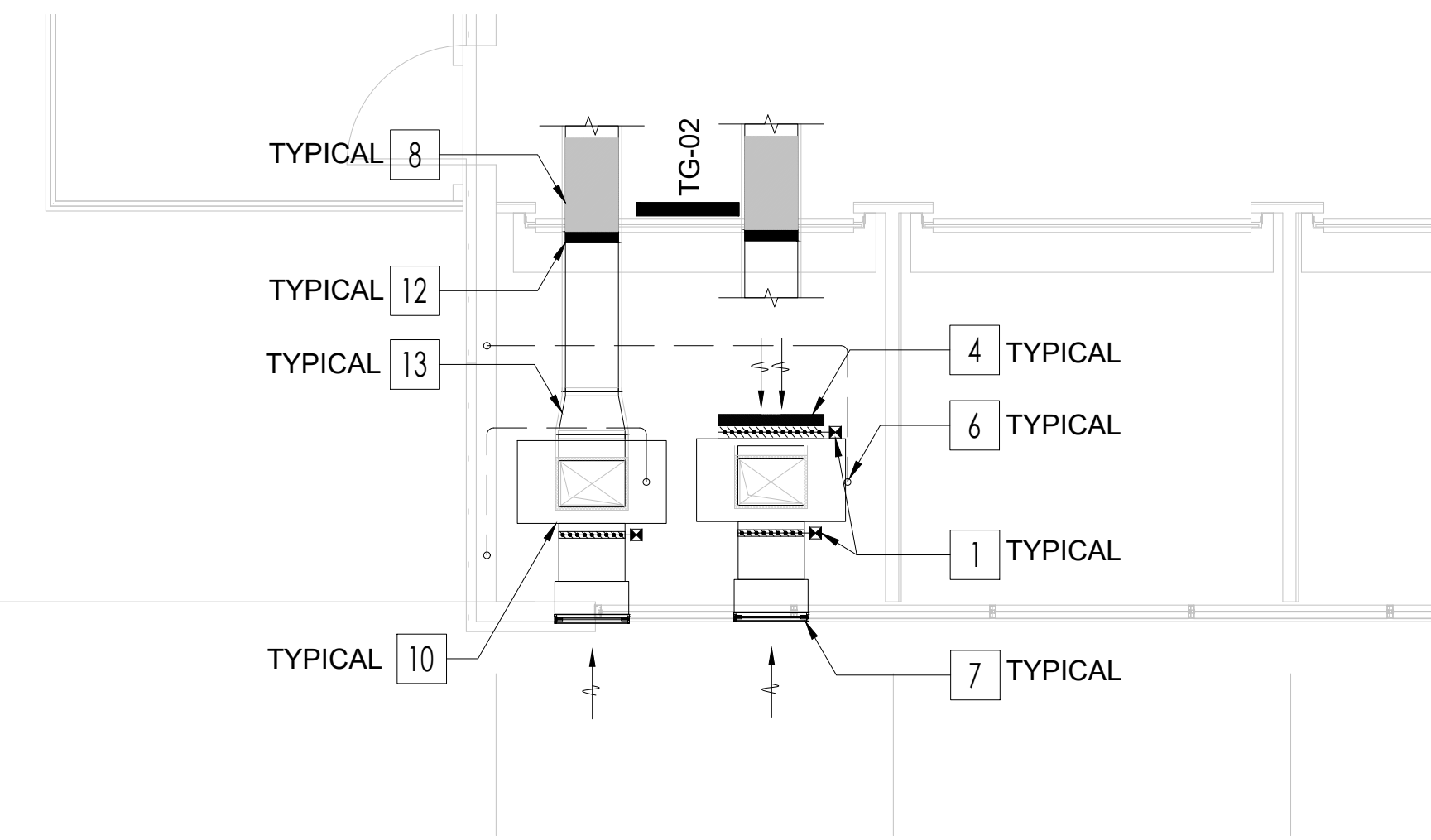
SHEET CONTENTS:

**FIRST FLOOR
MECHANICAL PLAN**

755073

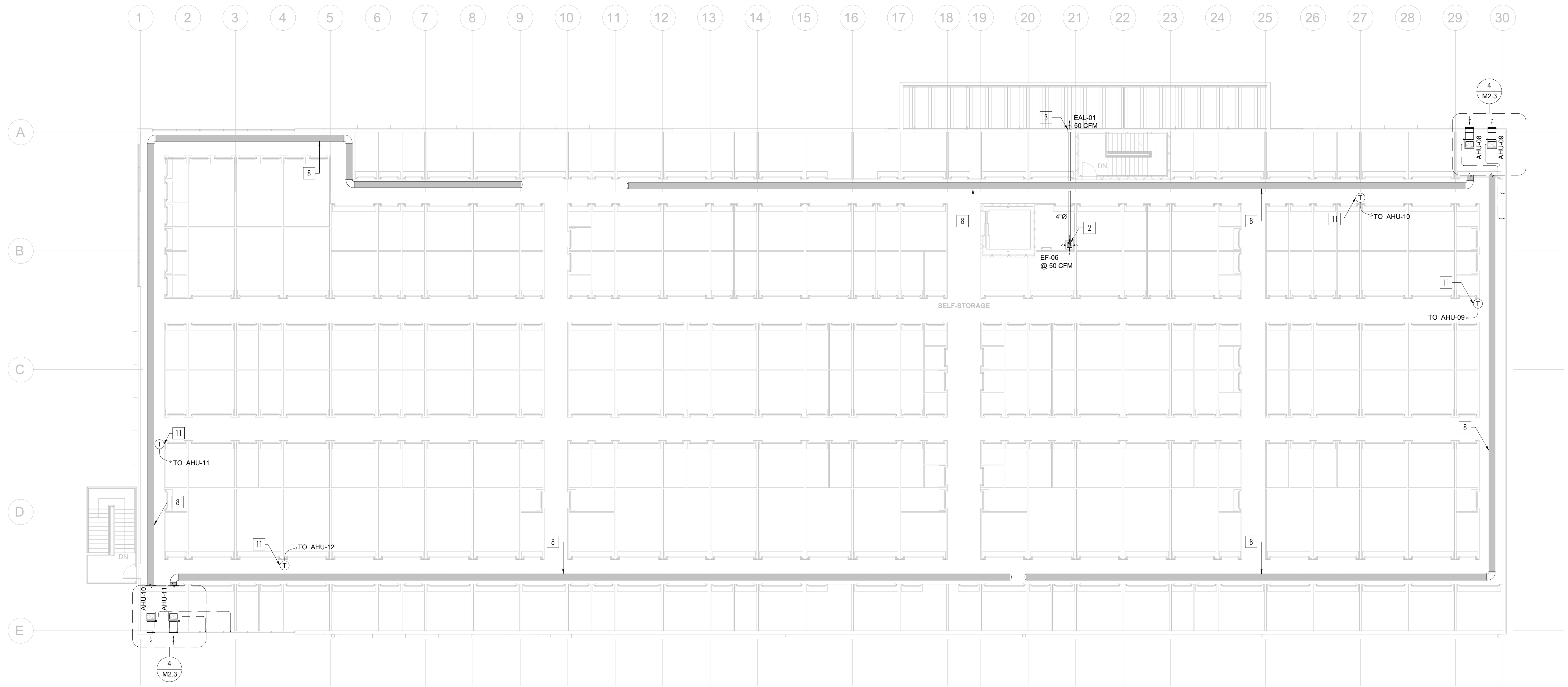
DRAWN:	MF
CHECKED:	OK M2.0
DATE:	05.10.2024

© 2021 AMERCO REAL ESTATE COMPANY



- MECHANICAL KEYED NOTES:**
1. MODULATING MOTORIZED DAMPER TO PROVIDE ECONOMIZER OPERATION - PROVIDE COMPLETE WITH NECESSARY CONTROLS, INSTRUMENTS & SEQUENCE OF OPERATION AS RECOMMENDED BY THE MANUFACTURER'S AND ENERGY CODE. ECONOMIZER KIT SHOULD BE SUPPLIED BY THE EQUIPMENT VENDOR - TRANE COMPLETE WITH THE OA LOUVER, MOTORIZED DAMPERS AND CONTROLS.
 2. PROVIDE BACK-DRAFT SHUTTER AT THE EXHAUST FAN OUTLET.
 3. EXHAUST DUCT TERMINATION TO OUTDOORS TO BE SPACED FROM ANY OPERABLE WINDOW BY >3'. THE LOCATIONS PROVIDED ARE WITHIN THE 3' LIMIT FROM THE PROPERTY LINE. LOCATE THE BOTTOM OF THE DISCHARGE AIR TERMINATION ABOVE GRADE BY +10' MINIMUM.
 4. RETURN AIR GRILL AT THE FACE OF THE UNIT WITH FILTER - FILTER AND CONNECTION TO GRILL SHOULD BE PROVIDED FROM TRANE - RETURN AIR GRILL SHOULD BE FIELD SUPPLIED 1/2" x 1/2" EGG CRATE TYPE.
 5. PROVIDE 1.5H FIRE SMOKE DAMPER WITH FACTORY SUPPLIED WALL SLEEVE THAT HAS MIN. LENGTH SAME AS THE WALL PLUS ALLOWANCE FOR NECK TIE TO THE DUCT / IF APPLICABLE - INSTALL AS PER MANUFACTURER'S SPECIFICATIONS - COORDINATE WITH FIRE ALARM CONTRACTOR FOR ELECTRICAL SPECIFICATIONS - THE FSD & SLEEVE SHOULD MATCH THE SAME DUCT SIZE.
 6. TERMINATE THE REFRIGERANT PIPING CONNECTION TO THE AHU - CONFIRM THE REFRIGERANT COPPER PIPING DIAMETERS BY THE MANUFACTURER PRIOR TO CONSTRUCTION - PROVIDE ACCESSORIES REQUIRED BY THE MANUFACTURER.
 7. PROVIDE OUTDOOR AIR LOUVER WITH THE ECONOMIZER KIT FROM TRANE - COORDINATE THE FINAL LOUVER POSITION AND INSTALLATION DETAILS WITH THE ARCHITECT PRIOR TO PROCUREMENT AND CONSTRUCTION.
 8. FABRIC DUCT COLOR, SIZING, SUPPORTS, PERFORATIONS, JETS AND ALL OTHER SELECTION CRITERIA SHOULD BE PROVIDED BY THE MANUFACTURER - REFER TO SPECIFICATIONS FOR DETAILS.
 9. REFRIGERANT LINES FROM OUTDOOR UNIT HEAT PUMP TO THE AHU COIL.
 10. PROVIDE A FIELD SUPPLIED RETURN AIR PLENUM BOX TO MOUNT THE AHU ON THE FLOOR - PROVIDE SMOKE DETECTOR IN RETURN AIR PLENUM BOX.
 11. PROVIDE THERMOSTATS CONTROLLER WITH 10 HOUR BACKUP BATTERY - INSTALL AT +48" ABOVE FINISH FLOOR LEVEL - SEE SPECIFICATIONS FOR MORE DETAILS.
 12. PROVIDE DUCT TRANSITION FROM RIGID DUCTWORK TO FABRIC DUCTWORK IN THE MECHANICAL ROOM - TRANSITION SHOULD BE SUPPLIED FROM THE FABRIC DUCT MANUFACTURER - CONNECTION METHOD SHOULD BE CONSTRUCTED AS PER FABRIC DUCTS MANUFACTURER RECOMMENDATION.
 13. PROVIDE DUCT TRANSITION FROM 24"x14" TO RIGID ROUND DUCT. RIGID ROUND DUCT SHOULD BE SIZED TO FOLLOW THE SAME DIAMETER THAT IS PROVIDED FOR THE MAIN FABRIC DUCT (SIZED BY THE FABRIC DUCT MANUFACTURER). DUCT TRANSITION SHOULD BE IN THE MECHANICAL ROOM.

- GENERAL NOTES:**
1. CONTRACTOR IS RESPONSIBLE FOR ROUGH-IN COORDINATION AND LOCATIONS. REFER TO ARCHITECTURAL PLANS FOR LOCATIONS AND FIXTURES.
 2. CONTRACTOR IS RESPONSIBLE FOR ANY REQUIRED CUTTING AND PATCHING.
 3. ALL NOTCHING, BORING, AND CUTTING OF HOLES IN WALL STUDS AND FLOOR JOISTS SHALL BE PERFORMED BASED ON THE LATEST ADOPTED AND APPROVED EDITION OF THE BUILDING CODE.
 4. FINAL EQUIPMENT LOCATIONS ARE TO BE COORDINATED AND APPROVED BY OWNER PRIOR TO INSTALLATION.
 5. CONTRACTOR SHALL PROGRAM ALL T-STATS PER THE OWNERS DIRECTION PRIOR TO SYSTEM BALANCING. SUPPLY FANS SHALL BE SET TO OPERATE CONTINUOUSLY DURING OCCUPIED HOURS AND THE COMPRESSOR SHALL CYCLE AND HEATING SHALL ACTIVATE AS REQUIRED TO MAINTAIN SPACE TEMPERATURE.
 6. CONTRACTOR SHALL PROVIDE REFRIGERANT PIPING FROM EACH AHU TO EACH CORRESPONDING OUTDOOR CONDENSER. SIZE AND INSTALL PIPING PER MANUFACTURER'S RECOMMENDATIONS.
 7. MAXIMUM FABRIC DUCT SIZE SHALL BE 10" DIAMETER.
 8. INSTALL DUCTSOX AS TIGHT TO CEILING AS POSSIBLE. PRIOR TO INSTALLATION, COORDINATE WITH OWNER'S REPRESENTATIVE FOR EXAMPLE OF INSTALLATION HEIGHT (APPROVE MOCKUP PRIOR TO CONSTRUCTION).
 9. FABRIC DUCT TO BE SIZED AND INSTALLED PER MANUFACTURER'S RECOMMENDATIONS.



MEP CONSULTANT:

GDI ENGINEERING
INNOVATING SOLUTIONS

GDI ENGINEERING
3707 Cypress Creek
Parkway, Suite 310
Houston, TX 77068
Office: 346-509-5860
www.gdiengdesign.com

SITE ADDRESS:
U-HAUL OF TEXAS AVE. II
2823 TEXAS AVENUE
COLLEGE STATION, TX 77845

SHEET CONTENTS:
**THIRD FLOOR
MECHANICAL PLAN**

755073

DRAWN:	MF
CHECKED:	OK M2.3
DATE:	05.10.2024

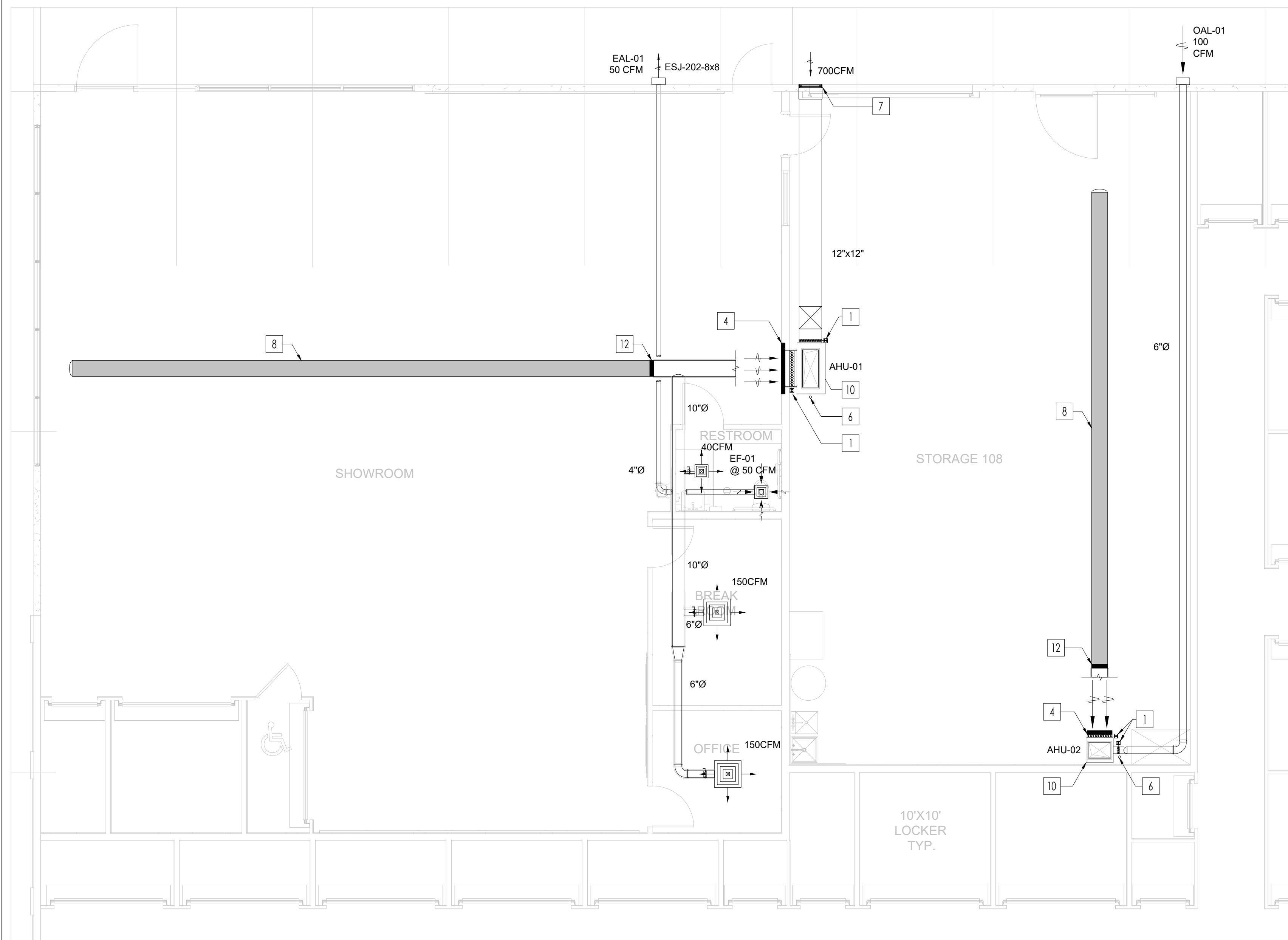
© 2021 AMERCO REAL ESTATE COMPANY

MECHANICAL KEYED NOTES:

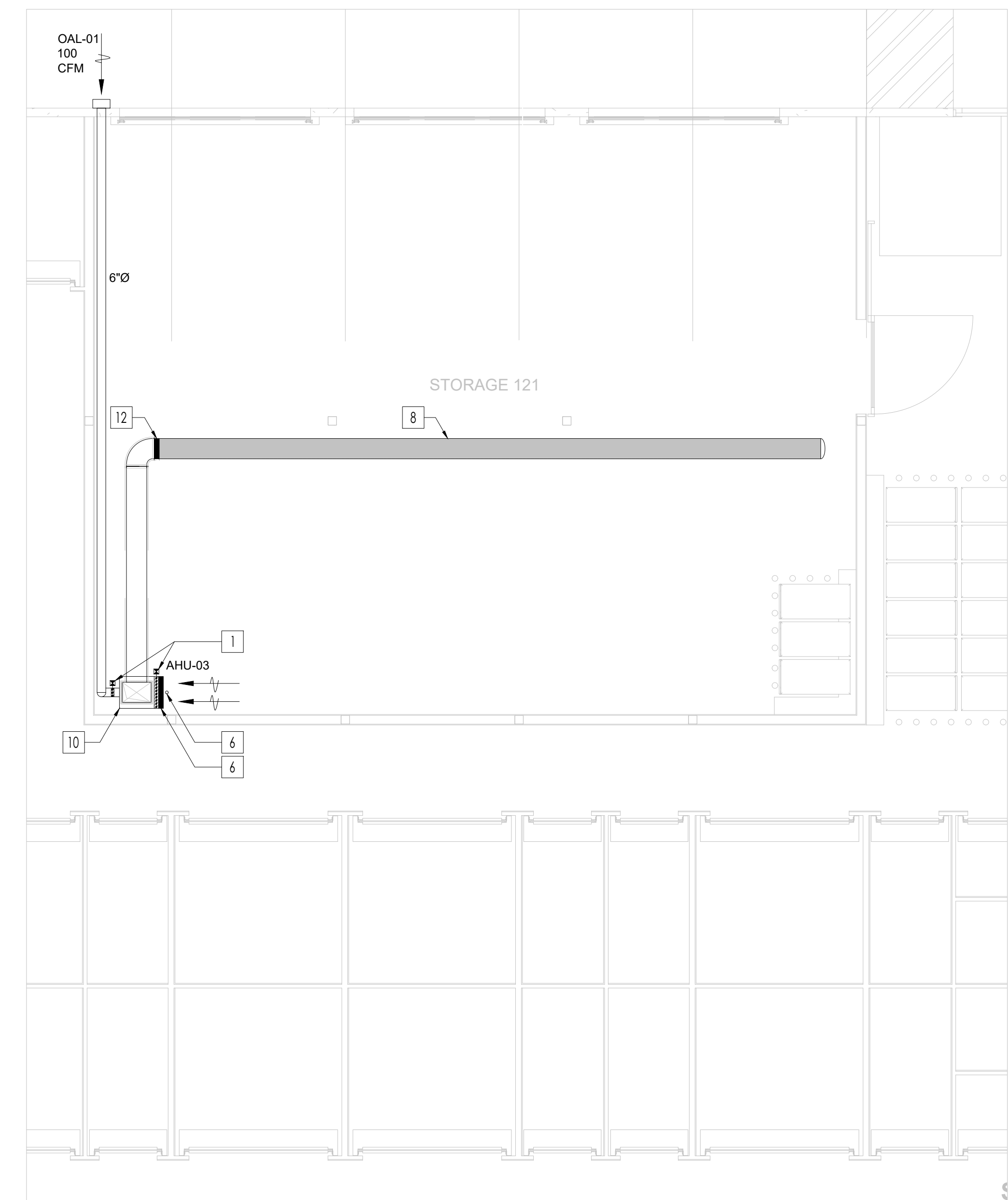
- 1 — OUTDOOR HEAT PUMPS INSTALLED ON A HOUSEKEEPING PAD - COORDINATE WITH THE ARCHITECT AND THE CIVIL ENGINEER FOR THE FINAL UNIT'S LOCATIONS AND THE HOUSEKEEPING PAD DETAILS.
- 2 — PROVIDE BACK-DRAFT SHUTTER AT THE EXHAUST FAN OUTLET.
- 3 — EXHAUST DUCT TERMINATION TO OUTDOORS TO BE SPACED FROM ANY OPERABLE WINDOW BY >3'. THE LOCATIONS PROVIDED ARE WITHIN THE 3' LIMIT FROM THE PROPERTY LINE, LOCATE THE BOTTOM OF THE DISCHARGE AIR TERMINATION ABOVE GRADE BY +10' MINIMUM.
- 4 — EXTERIOR WALL SEAL PENETRATION OUTLET WITH ELASTOMETRIC LINE-SET COMPRESSION SLEEVE TYPE "TITAN GS30" BY AIREX MANUFACTURING INC. & REFRIGERANT PIPE LINES TO ABOVE IN WALL.
PROVIDE 1.5H FIRE SMOKE DAMPER WITH FACTORY SUPPLIED WALL SLEEVE THAT HAS MIN. LENGTH SAME AS THE WALL PLUS ALLOWANCE FOR NECK TIE TO THE DUCT / IF APPLICABLE - INSTALL AS PER MANUFACTURER'S SPECIFICATIONS - COORDINATE WITH FIRE ALARM CONTRACTOR FOR ELECTRICAL SPECIFICATIONS - THE FSD & SLEEVE SHOULD MATCH THE SAME DUCT SIZE.
- 5 — PROVIDE MANUAL VOLUME DAMPER AT THE AHU'S OUTDOOR AIR CONNECTION - TERMINATE THE OA CONNECTION TO THE RETURN PLENUM BOX.
- 7 — RETURN AIR PLENUM & MIXING BOX WITH RETURN AIR FACE GRILL - SEE SCHEDULE FOR AIR DEVICE DETAILS - RETURN AIR GRILL SHOULD BE INSTALLED AT THE UNIT'S FACE THAT IS FREE OF OBSTACLES.
- 8 — FABRIC DUCT COLOR, SIZING, SUPPORTS, PERFORATIONS, JETS AND ALL OTHER SELECTION CRITERIA SHOULD BE PROVIDED BY THE MANUFACTURER - REFER TO SPECIFICATIONS FOR DETAILS.
- 9 — REFRIGERANT LINES FROM OUTDOOR UNIT HEAT PUMP TO THE AHU COIL.
- 10 — PROVIDE DISPOSABLE FILTER FOR THE OUTDOOR AIR LOUVER - FILTER SHOULD HAVE LATCHES AND MOBILE CASING TO ALLOW EASY REPLACEMENT OF THE FILTER.
- 11 — PROVIDE THERMOSTATS CONTROLLER WITH 10 HOUR BACKUP BATTERY - INSTALL AT +48" ABOVE FINISH FLOOR LEVEL - SEE SPECIFICATIONS FOR MORE DETAILS.

GENERAL NOTES:

1. CONTRACTOR IS RESPONSIBLE FOR ROUGH-IN COORDINATION AND LOCATIONS. REFER TO ARCHITECTURAL PLANS FOR LOCATIONS AND FIXTURES.
2. CONTRACTOR IS RESPONSIBLE FOR ANY REQUIRED CUTTING AND PATCHING.
3. ALL NOTCHING, BORING, AND CUTTING OF HOLES IN WALL STUDS AND FLOOR JOISTS SHALL BE PERFORMED BASED ON THE LATEST ADOPTED AND APPROVED EDITION OF THE BUILDING CODE.
4. FINAL EQUIPMENT LOCATIONS ARE TO BE COORDINATED AND APPROVED BY OWNER PRIOR TO INSTALLATION.
5. CONTRACTOR SHALL PROGRAM ALL T-STATS PER THE OWNERS DIRECTION PRIOR TO SYSTEM BALANCING. SUPPLY FANS SHALL BE SET TO OPERATE CONTINUOUSLY DURING OCCUPIED HOURS AND THE COMPRESSOR SHALL CYCLE AND HEATING SHALL ACTIVATE AS REQUIRED TO MAINTAIN SPACE TEMPERATURE.
6. CONTRACTOR SHALL PROVIDE REFRIGERANT PIPING FROM EACH AHU TO EACH CORRESPONDING OUTDOOR CONDENSER. SIZE AND INSTALL PIPING PER MANUFACTURER'S RECOMMENDATIONS.
7. MAXIMUM FABRIC DUCT SIZE SHALL BE 10" DIAMETER.
8. INSTALL DUCTSOX AS TIGHT TO CEILING AS POSSIBLE. PRIOR TO INSTALLATION, COORDINATE WITH OWNER'S REPRESENTATIVE FOR EXAMPLE OF INSTALLATION HEIGHT (APPROVE MOCKUP PRIOR TO CONSTRUCTION).
9. FABRIC DUCT TO BE SIZED AND INSTALLED PER MANUFACTURER'S RECOMMENDATIONS.



MECHANICAL ROOM ENLARGED LAYOUT SCALE 1/4"=1'-0" 1



MECHANICAL ROOM ENLARGED LAYOUT SCALE 1/4"=1'-0" 2

MEP CONSULTANT:



GDI ENGINEERING
INNOVATING SOLUTIONS

GDI ENGINEERING
3707 Cypress Creek
Parkway, Suite 310
Houston, TX 77068
Office: 346-509-5860
www.gdiengdesign.com

SITE ADDRESS:

U-HAUL OF TEXAS AVE. II
2823 TEXAS AVENUE
COLLEGE STATION, TX 77845

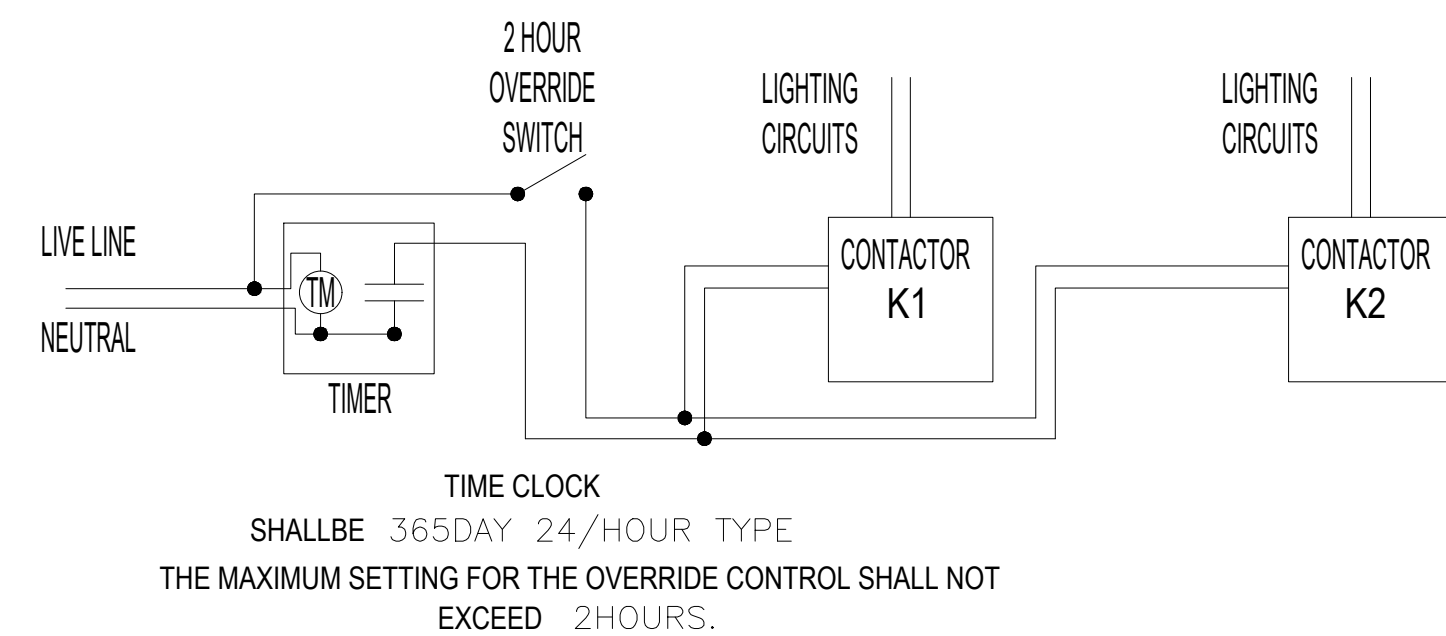
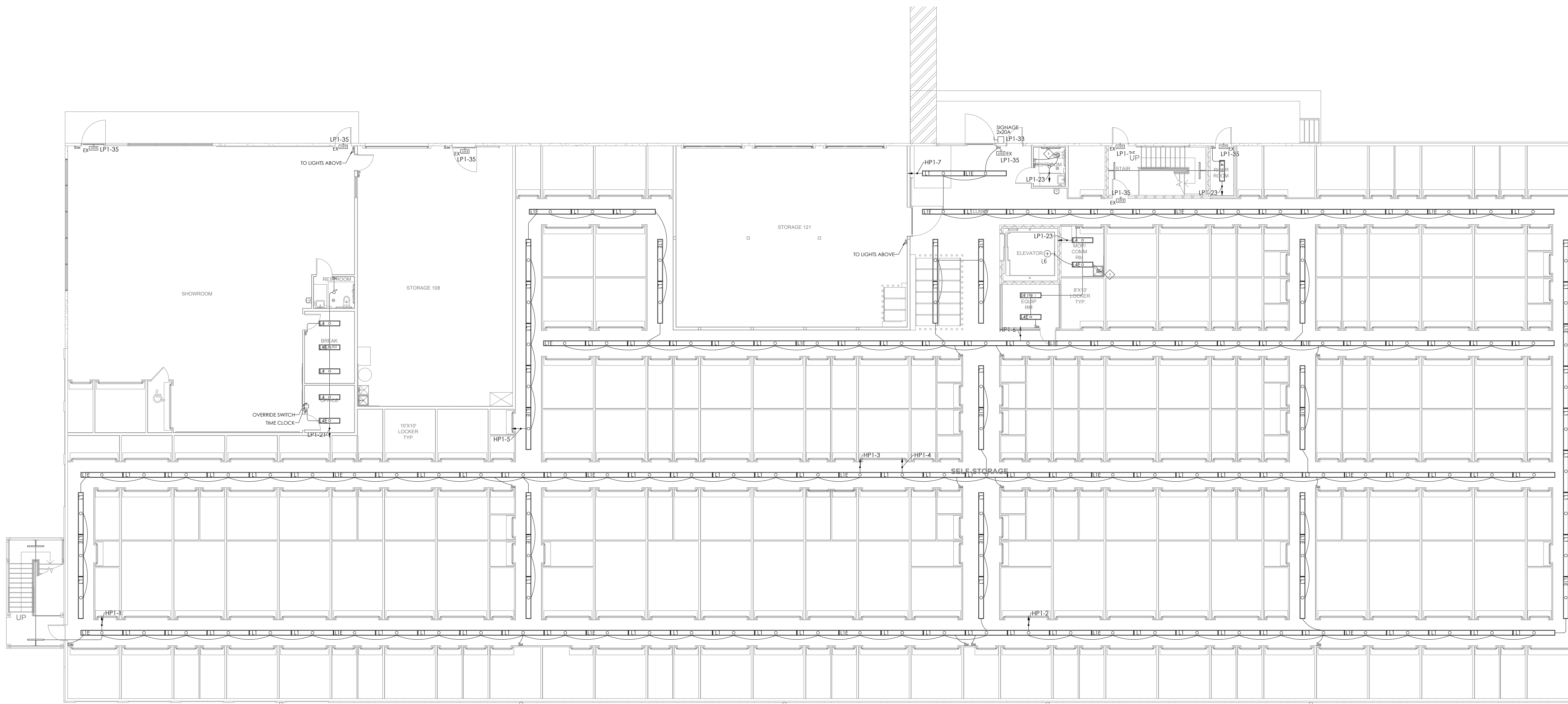
SHEET CONTENTS:

**FIRST FLOOR
MECHANICAL PLAN**

755073

DRAWN:	MF
CHECKED:	OK M2.1
DATE:	05.10.2024

© 2021 AMERCO REAL ESTATE COMPANY



ELECTRICAL LEGEND

- JUNCTION BOX FOR EXHAUST FANS
- DIMMER
- OCCUPANCY SENSOR
- ONE WAY LIGHTING SWITCH
- TWO WAYS LIGHTING SWITCH
- EMERGENCY LIGHTING WALL MOUNTED WITH INTERNAL BACK UP BATTERY WITH MINIMUM 90 MINS AUTONOMY
- EXIT SIGN WALL MOUNTED WITH INTERNAL BACK UP BATTERY WITH MINIMUM 90 MINS AUTONOMY
- SELF CONTAINED SMOKE/CARBON MONOXIDE (120 W/BATTERY BACKUP) - CEILING MOUNTED
- MOTION DETECTOR

LIGHTING FIXTURES SCHEDULE

TAG	SYMBOL	DESCRIPTION	TYPE	W	V	MOUNT.	MANUF.	MODEL	QUANTITY
L1		8' CHAIN HUNG INDUSTRIAL STRIP WITH (1) 4- LAMP BALLAST	FLOOR	72W	277V	SUSP.	LITHONIA LIGHTING	TC-232-MVOLT-GB10S-1/4	382
L1E		SAME AS L1 WITH EMERGENCY BATTERY KIT FOR 90MIN	FLOOR	72W	277V	SUSP.	LITHONIA LIGHTING	TC-232-MVOLT-GB10S-1/4-EL14	97
L2		8' CHAIN HUNG INDUSTRIAL REFLECTOR STRIP WITH (1) 4- LAMP BALLAST	FLOOR	72W	277V	SUSP.	LITHONIA LIGHTING	TAFAST-232-MVOLT-GB10S-1/4	41
L2E		SAME AS L2 WITH EMERGENCY BATTERY KIT FOR 90MIN	FLOOR	72W	277V	SUSP.	LITHONIA LIGHTING	TAFAST-232-MVOLT-GB10S-1/4-EL14	14
L3		RECESSED DOWNLIGHT 6" WITH EMERGENCY BATTERY KIT FOR 90MIN	FLOOR	26W	120V	REC.	LITHONIA LIGHTING	LIF6-2/13DTI-MVOLT	3
L4		4' CHAIN HUNG INDUSTRIAL REFLECTOR STRIP WITH (1) 2- LAMP BALLAST	FLOOR	36W	120V	SUSP.	LITHONIA LIGHTING	AFST-232-MVOLT-GB10S	8
L4E		SAME AS L4 WITH EMERGENCY BATTERY KIT FOR 90MIN	FLOOR	36W	120V	SUSP.	LITHONIA LIGHTING	AFST-232-MVOLT-GB10S-EL14	6
L5		4' CHAIN HUNG INDUSTRIAL REFLECTOR STRIP WITH (1) 2- LAMP BALLAST AND 90 MINUTE EM BATTERY	FLOOR	36W	277V	WALL	LITHONIA LIGHTING	AFST-232-MVOLT-GB10S-EL14	12
L6		4' WALLBRACKET STRIP WITH 90 MIN 54 BATTERY AND INTEGRAL MOTION SENSOR	FLOOR	36W	277V	WALL	LITHONIA LIGHTING	TC-232-MVOLT-GB10S-1/4-EL14	1

CIRCUITING NOTE

UNLESS MODIFIED BY VOLTAGE DROP NOTE BELOW OR UNLESS NOTED OTHERWISE, CIRCUITS SHALL BE AS FOLLOWS:

- 20A/1P SHALL BE 3/4", 2#12(CU), #12(CU)G
- 20A/2P SHALL BE 3/4", 3#12(CU), #12(CU)G
- 20A/3P SHALL BE 3/4", 4#12(CU), #12(CU)G
- 30A/1P SHALL BE 3/4", 2#10(CU), #10(CU)G
- 30A/2P SHALL BE 3/4", 3#10(CU), #10(CU)G
- 30A/3P SHALL BE 3/4", 4#10(CU), #10(CU)G

IN ORDER TO MINIMIZE VOLTAGE DROP ISSUES, 120 V. CONDUCTOR RUNS BETWEEN 100' AND 199' SHALL BE INSTALLED 1 SIZE LARGER THAN REQUIRED PER N.E.C. 310.15(B)(16). 120 V. CONDUCTOR RUNS OVER 200' SHALL BE INSTALLED 2 SIZES LARGER THAN REQUIRED PER N.E.C. 310.15(B)(16). 208 V., 277 V. AND 480 V. CONDUCTOR RUNS OVER 200' SHALL BE INSTALLED 1 SIZE LARGER THAN REQUIRED PER N.E.C. 310.15(B)(16). ALL GROUNDS SERVING THESE RUNS SHALL BE UP-SIZED ACCORDINGLY.

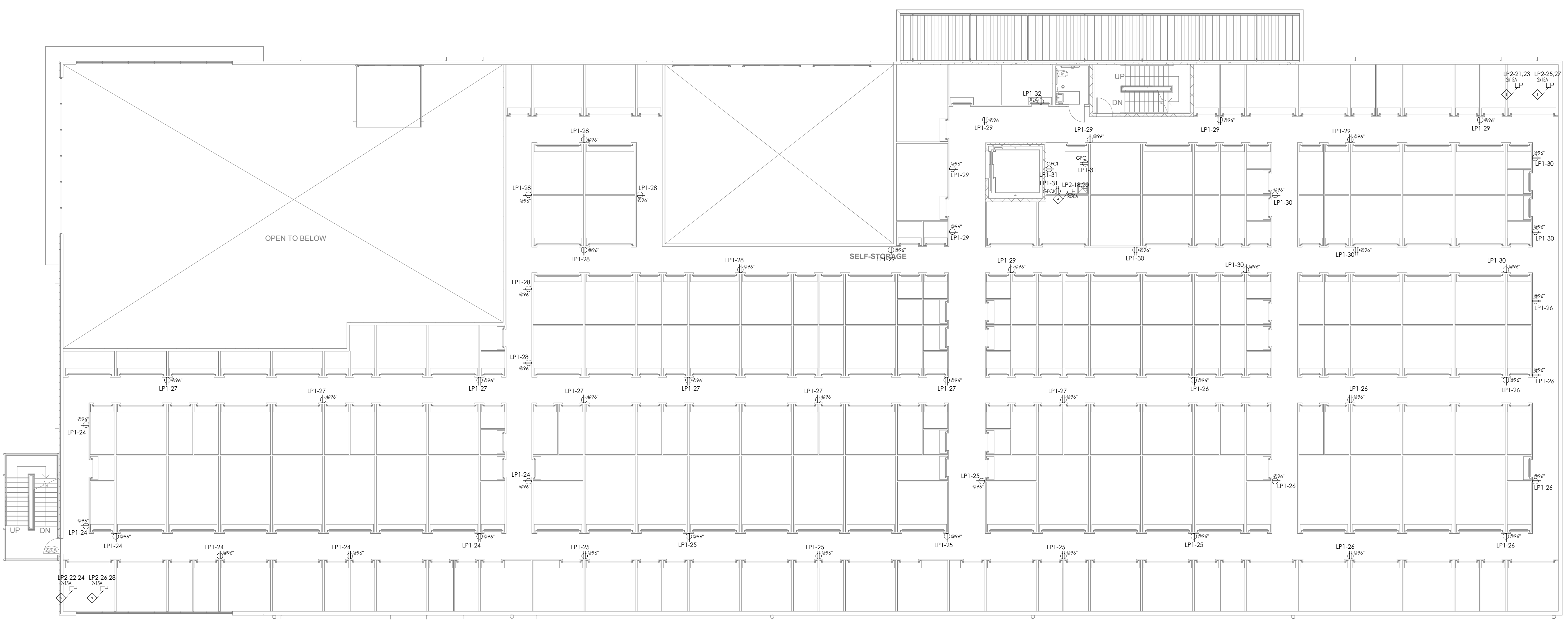
GENERAL NOTES

- ALL EXTERIOR DEVICES SHALL BE WEATHERPROOF.
- ALL WIRING FOR EXTERIOR LIGHTING AND POWER DEVICES SHALL BE A MINIMUM OF 10 A.W.G. COPPER WITH TYPE "THWN-2" INSULATION (UNO) FOR UNDERGROUND CIRCUITS RUN IN PVC. PROVIDE A 10 A.W.G. COPPER GROUND IN ADDITION TO CIRCUIT CONDUCTORS (UNO).
- PROVIDE UNSWITCHED LEG OF CIRCUIT TO ALL EMERGENCY "EM" BATTERY PACK/BALLASTS, NL FIXTURES AND EXIT SIGNS.
- VERIFY OFFICIAL EMERGENCY PATH OF EGRESS AS SHOWN IN ARCHITECTURAL PLANS.
- MEMBRANE PENETRATION THROUGH WALLS SHALL BE PROTECTED IN ACCORDANCE WITH THE LATEST ADOPTED EDITION OF I.B.C. 712.32.
- ELECTRICAL CONTRACTOR SHALL COORDINATE ALL REQUIREMENTS WITH THE LOW VOLTAGE SYSTEMS INSTALLER PRIOR TO START OF WORK.
- CONNECT EXIT SIGNS TO NEAREST LIGHTING CIRCUIT UNLESS NOTED OTHERWISE.
- OCCUPANCY SENSORS LOCATED WITHIN STORAGE AISLES SHALL BE INSTALLED TO ONLY ACTIVATE LIGHTING FIXTURES LOCATED WITHIN THE SAME AISLE.
- SHADING OR EM INDICATES LUMINAIRE WITH 1400 LUMEN, 90 MINUTE BATTERY BACK-UP. PROVIDE UNSWITCHED LEG FOR LOSS-OF-POWER SENSING. VERIFY NUMBER OF EXISTING UNITS, TEST UNITS AND PROVIDE ADDITIONAL AS REQUIRED. PROVIDE ADDITIONAL UNITS S REQUIRED TO MAINTAIN 1fc ALONG PATH OF EGRESS TO THE SATISFACTION OF THE A.H.J.
- NL INDICATES NIGHTLIGHT. PROVIDE UNSWITCHED LEG OF CIRCUIT FOR THIS LUMINAIRE.
- SEE SHEET E1.0 FOR GENERAL AND EMERGENCY EXTERIOR LIGHTING.
- CIRCUIT ALL 227 V. LIGHTING DEVICES TO PANELBOARD HP1. CIRCUIT NUMBERS INDICATED, AND ALL 120 V. LIGHTING DEVICES TO PANELBOARD HP1. CIRCUIT NUMBER INDICATED, UNLESS NOTED OTHERWISE.
- COORDINATE ALL EXIT SIGN LOCATIONS AND DIRECTIONAL ARROWS WITH ARCHITECTURAL PLANS PRIOR TO START OF WORK.

SHE	
RE	
NO.	DESCRIPTION
DATE	
PROFES	
ARCHI	
MEP C	
AME REAL CO CONSTRUCT 2727 NORTH PHOENIX, P: (60)	
GDI ENGINEERING 3707 Cypress Creek Parkway, Suite 310 Houston, TX 77068 Office: 346-509-5860 www.gdiengdesign.com	
SITE ADDRESS:	
U-HAUL OF TEXAS AVE. II 2823 TEXAS AVENUE COLLEGE STATION, TX 77845	
SHEET CONTENTS:	
LIGHTING PLAN FIRST FLOOR	
755073	
DRAWN:	SH
CHECKED:	AB
DATE:	05.07.2024
E 201	

© 2024 AMERCO REAL ESTATE COMPANY

© 2024 AMERCO REAL ESTATE COMPANY



GENERAL NOTES

- A. CONNECT ALL 277 V. AND 480 V. OUTDOOR UNITS (OU) ON THIS PLAN TO PANELBOARD HP2. UNLESS NOTED OTHERWISE, CONNECT ALL 120 V. AND 208 V. POWER DEVICES ON THIS PLAN TO PANELBOARD LP2, UNLESS NOTED OTHERWISE. CIRCUIT NUMBERS INDICATED.
- B. REFER TO MECHANICAL SCHEDULES ON SHEET E0.2 FOR WIRE SIZE AND DISCONNECT RATING REQUIREMENTS. REFER TO POWER AND SIGNAL DRAWINGS FOR ELECTRICAL PANELBOARD LOCATIONS.
- C. ALL EXTERIOR DEVICES SHALL BE WEATHERPROOF AND GFCI PROTECTED.
- D. MEMBRANE PENETRATION THROUGH WALLS SHALL BE PROTECTED IN ACCORDANCE WITH THE LATEST ADOPTED EDITION OF I.B.C. 712.32.
- E. ALL WORK WILL BE PERFORMED IN STRICT ACCORDANCE WITH ALL NATIONAL AND LOCAL CODES, STANDARDS AND SAFE WORK PROCEDURES.
- F. ANY EXISTING DEVICES WHOSE CIRCUITS MAY HAVE BEEN REASSIGNED TO NEW WORK WILL BE RE-FED FROM SPARE BREAKERS IN THE NEAREST AVAILABLE PANEL SUITABLE TO THE ENGINEER. NOTIFY ENGINEER OF SUCH OCCURRENCES FOR FURTHER DIRECTION. THE ENGINEER WILL EVALUATE FIELD SUGGESTIONS REGARDING NEW SOURCES FOR REFERENCED DEVICES.
- G. THE CONTRACTOR IS RESPONSIBLE FOR COORDINATING WITH ALL TRADES AND PROVIDING ALL EQUIPMENT, DEVICES, APPURTENANCES AND SUPPORT AS REQUIRED FOR A FULLY FUNCTIONAL SYSTEM.
- H. CONTRACTOR WILL MAINTAIN CLEARANCES ABOUT ELECTRICAL EQUIPMENT PER NEC 110.26

CIRCUITING NOTE

UNLESS MODIFIED BY VOLTAGE DROP NOTE BELOW OR UNLESS NOTED OTHERWISE, CIRCUITS SHALL BE AS FOLLOWS:

- 20A/1P SHALL BE 3/4", 2#12(CU), #12(CU)G
- 20A/2P SHALL BE 3/4", 3#12(CU), #12(CU)G
- 20A/3P SHALL BE 3/4", 4#12(CU), #12(CU)G
- 30A/1P SHALL BE 3/4", 2#10(CU), #10(CU)G
- 30A/2P SHALL BE 3/4", 3#10(CU), #10(CU)G
- 30A/3P SHALL BE 3/4", 4#10(CU), #10(CU)G

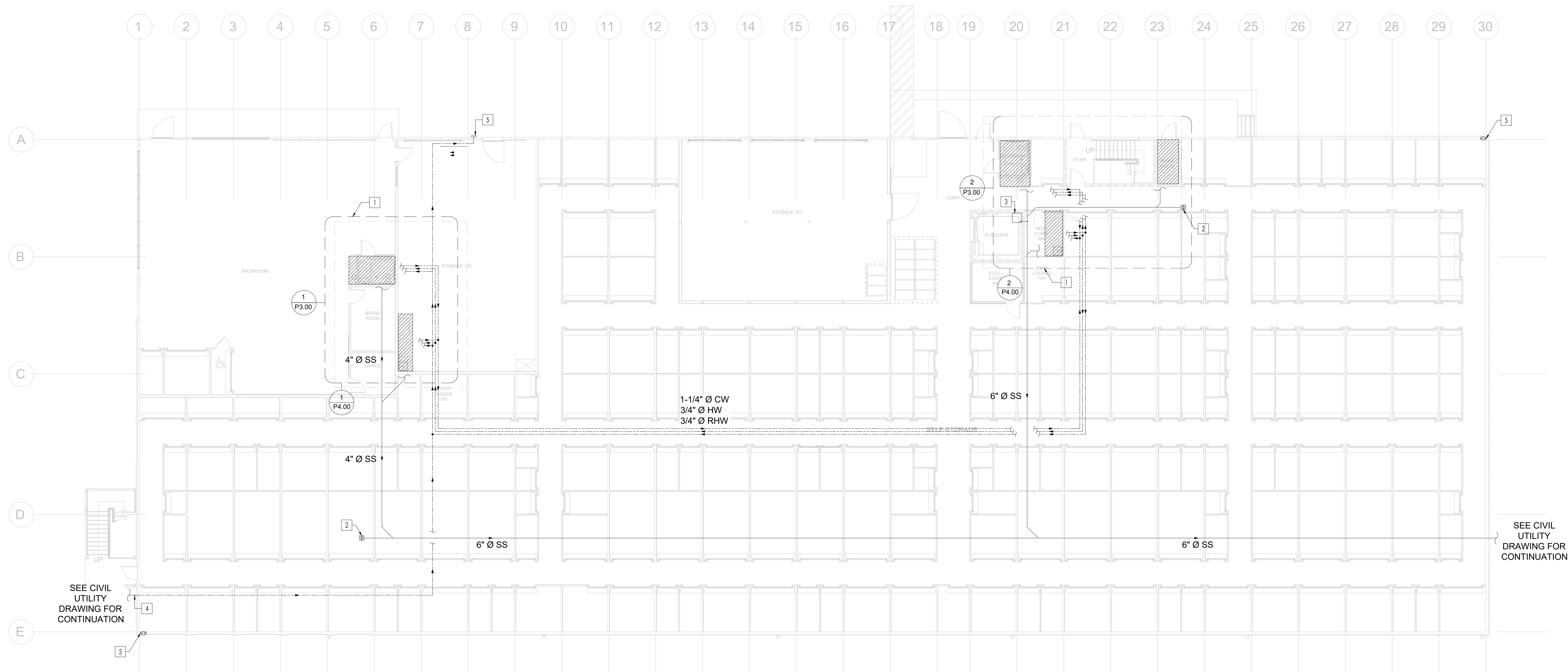
IN ORDER TO MINIMIZE VOLTAGE DROP ISSUES, 120 V. CONDUCTOR RUNS BETWEEN 100' AND 199' SHALL BE INSTALLED 1 SIZE LARGER THAN REQUIRED PER N.E.C. 310.15(B)(16). 120 V. CONDUCTOR RUNS OVER 200' SHALL BE INSTALLED 2 SIZES LARGER THAN REQUIRED PER N.E.C. 310.15(B)(16). 208 V., 277 V. AND 480 V. CONDUCTOR RUNS OVER 200' SHALL BE INSTALLED 1 SIZE LARGER THAN REQUIRED PER N.E.C. 310.15(B)(16). ALL GROUNDS SERVING THESE RUNS SHALL BE UP-SIZED ACCORDINGLY.

ELECTRICAL LEGEND	
	DUPLEX RECEPTACLE - WALL MOUNTED @ +18" AFF UNLESS NOTED. GFCI DENOTES: GROUND FAULT PROTECTION
	DUPLEX RECEPTACLE - FLOOR MOUNTED IG DENOTES: IG TYPE
	QUADPLEX RECEPTACLE - WALL MOUNTED @ +18" AFF UNLESS NOTED. GFCI DENOTES: GROUND FAULT PROTECTION
	NON-FUSED DISCONNECT SWITCH - SIZE AS INDICATED
	DAYLIGHT SENSOR TO CONTROL LUMINARIES IN DAYLIGHT ZONE
	WALL MOUNTED ELECTRIC JUNCTION BOX
	CEILING MOUNTED ELECTRIC JUNCTION BOX

SHEET NOTES:

- ◇ PROVIDE NEMA 3R DISCONNECT SWITCH FOR UNIT HEATERS
- ◇ PROVIDE NEMA 3R DISCONNECT SWITCH FOR HEAT PUMPS
- ◇ PROVIDE NEMA 3R DISCONNECT SWITCH FOR AIR HANDLING UNITS
- ◇ PROVIDE NEMA 3R DISCONNECT SWITCH FOR ELECTRIC WATER HEATER
- ◇ PROVIDE HEAVY DUTY JUNCTION BOX FOR EXHAUST FANS
- ◇ PROVIDE NEMA 3R DISCONNECT SWITCH FOR SUMP PUMP

- PLUMBING KEYED NOTES:**
- 1 → SEE ENLARGED PLUMBING PLANS.
 - 2 → 4" FLOOR CLEAN-OUT.
 - 3 → ELEVATOR SUMP PUMP - SEE SCHEDULE & INSTALLATION DETAILS.
 - 4 → DCW ENTRY TO BUILDING - SEE DETAILS - PROVIDE FREEZE PROTECTION.
 - 5 → DCW CONNECTION TO HOSE BIB AT +25" ABOVE FLOOR LEVEL - PROVIDE SHUT-OFF VALVE AT +48" ABOVE FLOOR LEVEL - PROVIDE VACUUM BREAKER AT THE HOSE BIB.



SEE CIVIL UTILITY DRAWING FOR CONTINUATION

SEE CIVIL UTILITY DRAWING FOR CONTINUATION

FIRST FLOOR PLUMBING LAYOUT

SCALE 3/32"=1'-0" 1

MEP CONSULTANT:
GDI ENGINEERING
 INNOVATING SOLUTIONS
 GDI ENGINEERING
 3707 Cypress Creek
 Parkway, Suite 310
 Houston, TX 77068
 Office: 346-509-5860
 www.gdiengdesign.com

SITE ADDRESS:
 U-HAUL OF TEXAS AVE. II
 2823 TEXAS AVENUE
 COLLEGE STATION, TX 77845

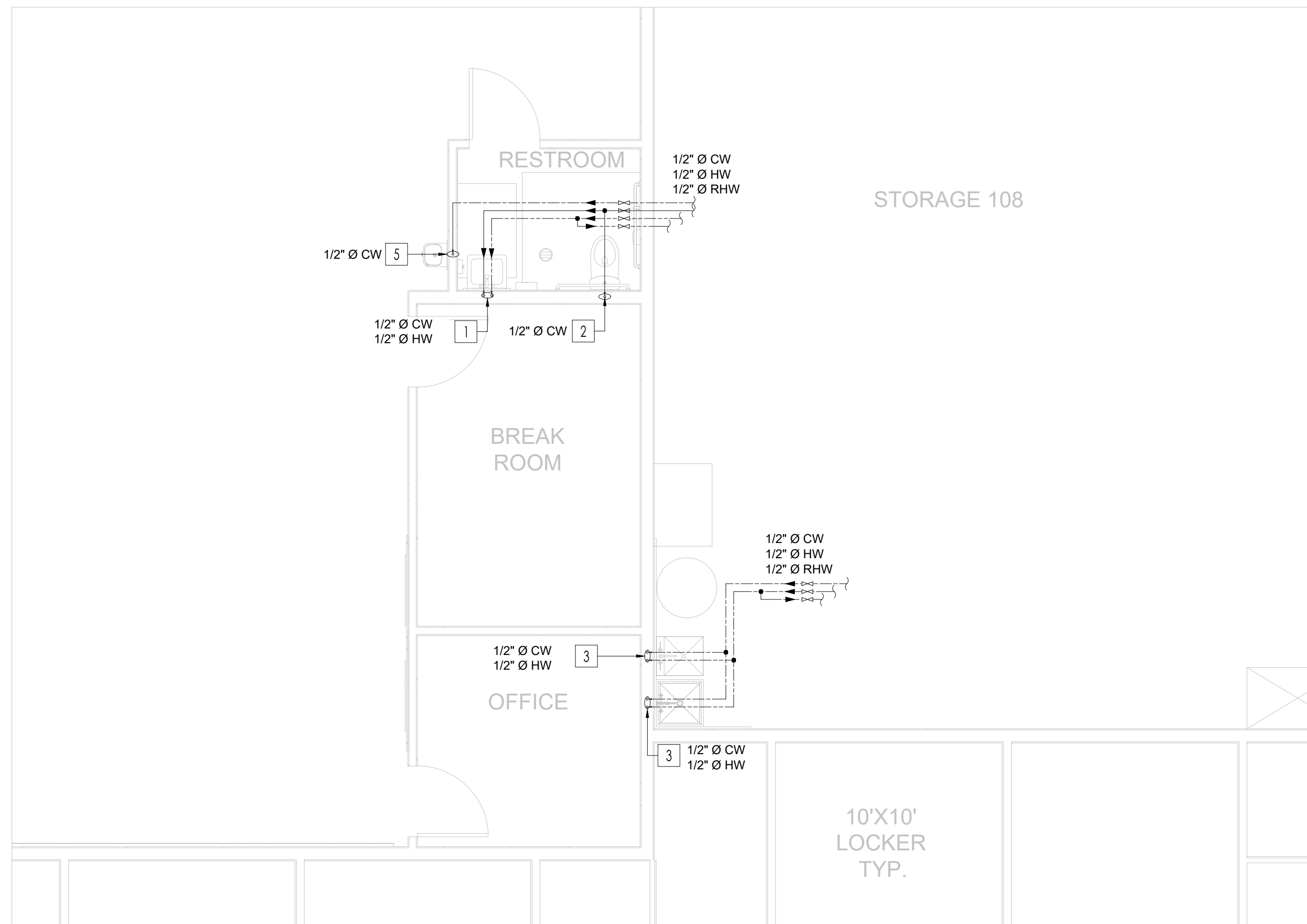
SHEET CONTENTS:

FIRST FLOOR PLUMBING PLAN

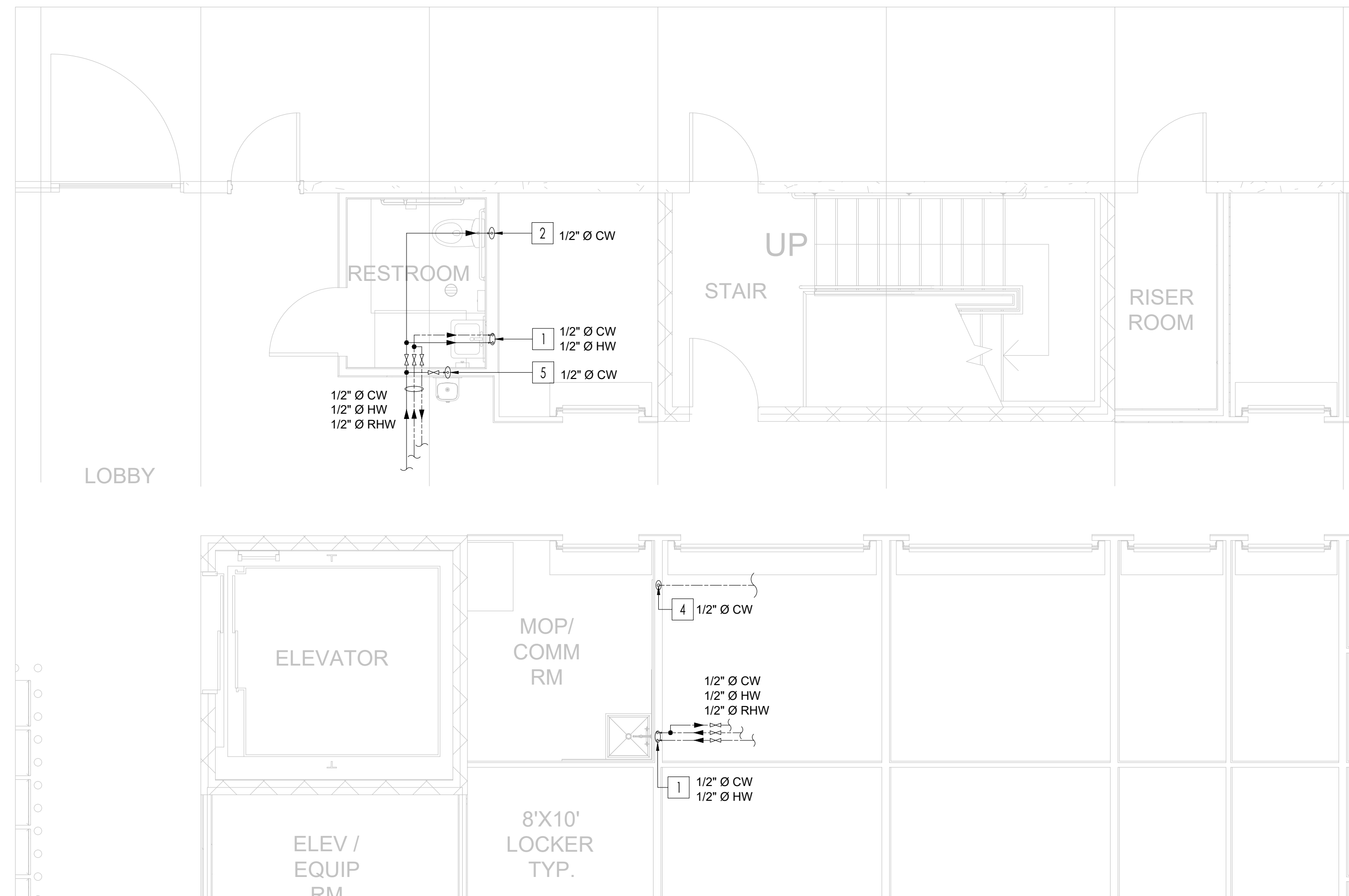
755073

DRAWN:	MF
CHECKED:	OK P2.0
DATE:	05.10.2024

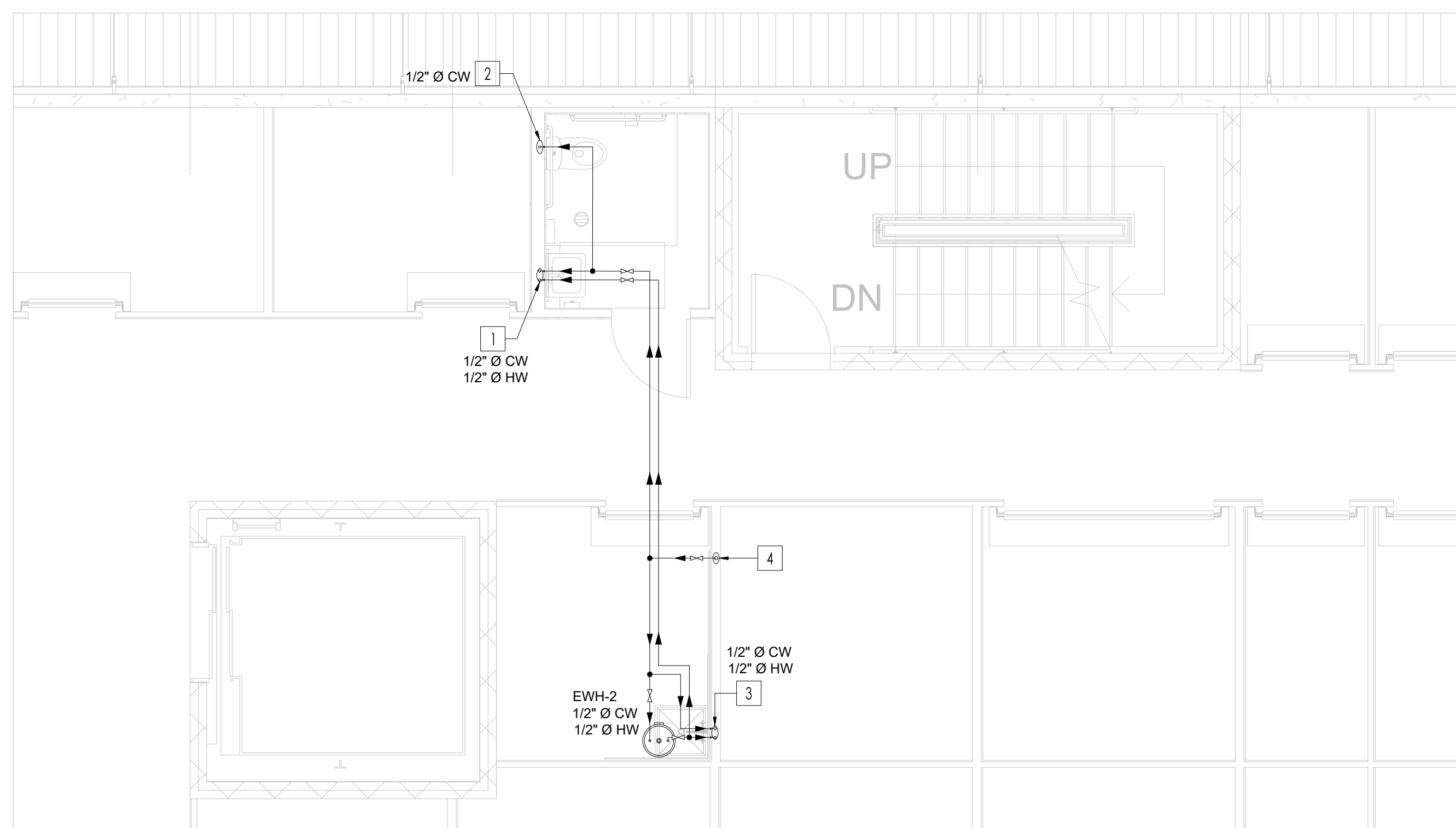
© 2021 AMERCO REAL ESTATE COMPANY



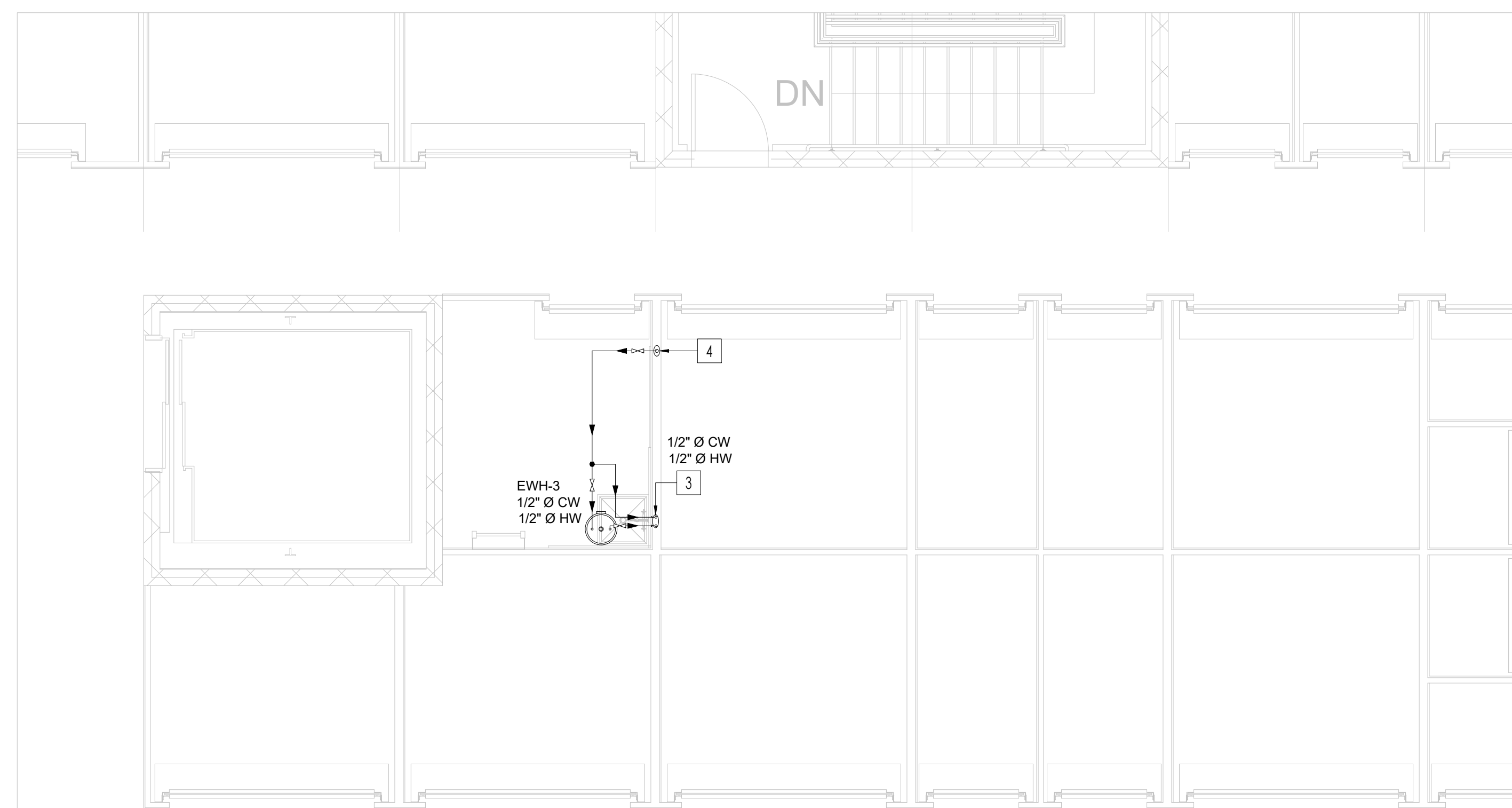
FIRST FLOOR ENLARGED LAYOUT SCALE 1/4"=1'-0" 1



FIRST FLOOR ENLARGED LAYOUT SCALE 1/4"=1'-0" 2




SECOND FLOOR ENLARGED LAYOUT SCALE 1/4"=1'-0" 3



THIRD FLOOR ENLARGED LAYOUT SCALE 1/4"=1'-0" 4

MEP CONSULTANT:



GDI ENGINEERING
INNOVATING SOLUTIONS

GDI ENGINEERING
3707 Cypress Creek
Parkway, Suite 310
Houston, TX 77068
Office: 346-509-5860
www.gdiengdesign.com

SITE ADDRESS:
U-HAUL OF TEXAS AVE. II
2823 TEXAS AVENUE
COLLEGE STATION, TX 77845

SHEET CONTENTS:
**WATER SUPPLY
ENLARGED PLAN**

755073

DRAWN:	MF
CHECKED:	OK P3.00
DATE:	05.10.2024

© 2021 AMERCO REAL ESTATE COMPANY